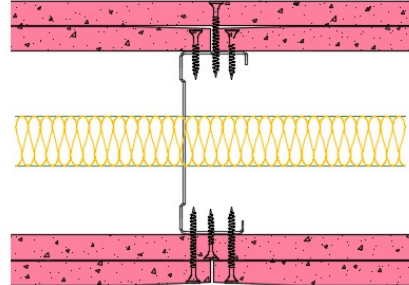


## 92-B-61(25) - SPEEDLINE System Data Sheet - Version V1 (24-10-23)

SPEEDLINE 92mm 'C' Stud Partition @600mm Ctrs,  
with 2x BG Gyproc 12.5mm FireLine each side,  
25mm APR



### System Performance Breakdown

Fire Resistance:

BS476 Part 22:1987:

Test Ref & Date or Applied Ref & Report:

Max Height:

Thickness:

Duty Grade: BS 5234: Part 2:1992:

Sound Insulation:

**120/120 Minutes (Integrity/Insulation).**

**BTC 17442F - BRE Report P102396-1011A**

**Refer to Speedline Specification Clause**

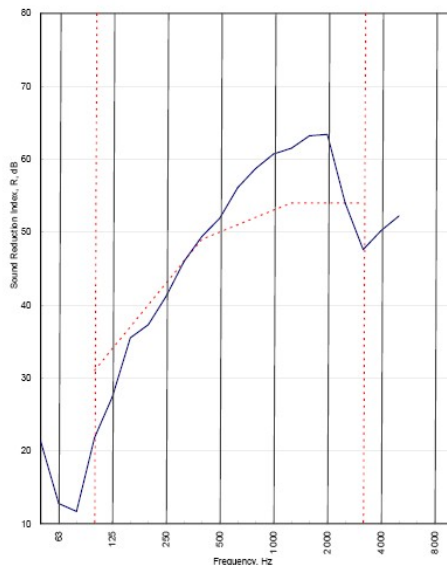
**142 mm.** (At Base Track, Excluding Finishes)

**Severe - Annexes A-F**

**50  $R_w$ dB**, Date Tested or Assessed Against - 70-B-57(25)

Test Code:  
H17485AA  
Test Date:  
14/07/2011

Freq. Hz	R dB
50	21.3
63	12.8
80	11.7
100	21.8
125	27.4
160	35.5
200	37.3
250	41.2
315	46.0
400	49.4
500	51.9
630	56.1
800	58.7
1 000	60.7
1 250	61.5
1 600	63.2
2 000	63.4
2 500	54.0
3 150	47.6
4 000	50.2
5 000	52.2
6 300	
8 000	
10 000	



----- Curve of reference values (ISO 717-1)

Rating according to BS EN ISO 717-1:1997  
 **$R_w$  (C;Ctr) = 50 (-3;-10) dB**  
 Max dev. 9.2 dB at 100 Hz  
 Evaluation based on laboratory measurement results obtained by an engineering method:  
 $C_{50-3150} = -8$  dB     $C_{50-5000} = -8$  dB     $C_{100-5000} = -3$  dB  
 $C_{7-50-3150} = -20$  dB     $C_{7-50-5000} = -20$  dB     $C_{7-100-5000} = -10$  dB

TESTED AT ONE OF THE UKAS ACCREDITED LABORATORIES BELOW

B.T.C (H-Ref on Graph)

B.R.E

AIRO

S.R.L

Customer: Metsec plc Hepsec Division



BTC 17485A: Page 9 of 11

SPEEDLINE Drywall Systems, Adsetts House, 16 Europa View, Sheffield Business Park, Sheffield, S9 1XH.

Tel: 0114 231 8030.

Email: [enquiries@speedlinedrywall.co.uk](mailto:enquiries@speedlinedrywall.co.uk)

(As per the requirements set out in ISO/IEC 17025:2017 regarding test data the results stated have been carried out by voestalpine Metsec plc as part of the contract to supply Speedline Metal Sections to SIG Plc)

